



1041-60PH in Leather 946-80



1041-60PH in Leather 946-80



1041-60PH in Leather 946-80

FLEXSTEEL®

Henry | 1041



ZERO GRAVITY

© Flexsteel Industries, Inc. | Last Updated 12/09/2024

ARRAY

64PH  
62PH  
60PH  
50PH

FEATURES

Flexsteel Spring Unit

- DualFlex

Back Construction

- Attached

Seat Construction

- Attached

Seat Cushion(s)

- High-Density (HC)

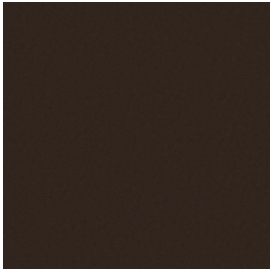
● Standard

○ Optional

PRODUCT DIMENSIONS

	OVERALL			SEAT			Arm Height	Open Depth	Wall Clearance
	Height	Width	Depth	Height	Width	Depth			
<b>Power Reclining Loveseat with Console &amp; Power Headrests &amp; Lumbar</b> -64PH	44"	75"	41"	21"	44"	22"	27"	68"	7"
<b>Power Reclining Sofa with Power Headrests &amp; Lumbar</b> -62PH	44"	86"	41"	21"	67"	22"	27"	68"	7"
<b>Power Reclining Loveseat with Power Headrests &amp; Lumbar</b> -60PH	44"	63"	41"	21"	44"	22"	27"	68"	7"
<b>Power Recliner with Power Headrest &amp; Lumbar</b> -50PH	44"	40"	41"	21"	22"	22"	27"	68"	7"

**Stocked Colors**



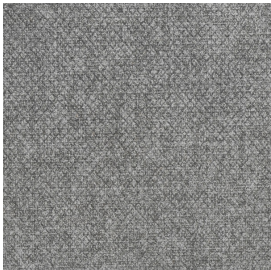
Burnt Umber  
**946-71**  
Leather/Match



Caramel  
**946-72**  
Leather/Match



Beige  
**946-80**  
Leather/Match



Fog  
**425-01**  
Fabric

*Printed samples may vary from actual swatches. Please refer to swatches for actual color.*

**NOTES**

The power control allows you to independently adjust the recline, headrest, and lumbar support.

A separate home button returns the headrest, footrest, and lumbar support to their original positions with one touch.

A USB port is included on the power control for powering electronics.

Zero draw technology only uses power when the USB port is in use.



**Power Recline,  
Headrest, & Lumbar**