



1041-50PH in Fabric 425-01



1041-50PH in Fabric 425-01



1041-50PH in Fabric 425-01

FLEXSTEEL®

Henry | 1041



ZERO GRAVITY

© Flexsteel Industries, Inc. | Last Updated 09/03/2024

ARRAY

64PH
62PH
60PH
50PH

FEATURES

Flexsteel Spring Unit

- DualFlex

Back Construction

- Attached

Seat Construction

- Attached

Seat Cushion(s)

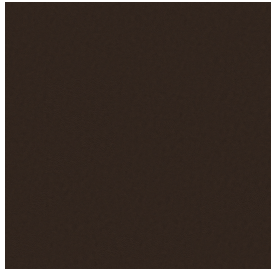
- High-Density (HC)

- Standard
- Optional

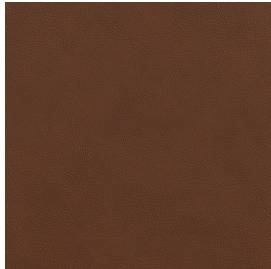
PRODUCT DIMENSIONS

	OVERALL			SEAT			Arm Height	Open Depth	Wall Clearance
	Height	Width	Depth	Height	Width	Depth			
Power Reclining Loveseat with Console & Power Headrests & Lumbar -64PH	44"	75"	41"	21"	44"	22"	27"	68"	7"
Power Reclining Sofa with Power Headrests & Lumbar -62PH	44"	86"	41"	21"	67"	22"	27"	68"	7"
Power Reclining Loveseat with Power Headrests & Lumbar -60PH	44"	63"	41"	21"	44"	22"	27"	68"	7"
Power Recliner with Power Headrest & Lumbar -50PH	44"	40"	41"	21"	22"	22"	27"	68"	7"

Stocked Colors



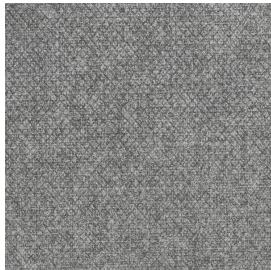
Burnt Umber
946-71
Leather/Match



Caramel
946-72
Leather/Match



Beige
946-80
Leather/Match



Fog
425-01
Fabric

Printed samples may vary from actual swatches. Please refer to swatches for actual color.

NOTES

The power control allows you to independently adjust the recline, headrest, and lumbar support.

A separate home button returns the headrest, footrest, and lumbar support to their original positions with one touch.

A USB port is included on the power control for powering electronics.

Zero draw technology only uses power when the USB port is in use.



**Power Recline,
Headrest, & Lumbar**